

## Australian Aboriginal Cultures Gallery - Ground Floor Middle Years Inquiry Cards



Principal Gallery Sponsor



This Outreach Education Program for schools is made possible by the partnership between the South Australian Museum and the Department of Education and Children's Services. Outreach Education is a team of seconded teachers based in public institutions.

© The Department for Education and Child Development and the South Australian Museum.

This work may be reproduced by South Australian teachers for use with their students. For all other uses contact the South Australian Museum Education Service.

All images and artwork in this work are copyright of the South Australian Museum, unless otherwise indicated.

Developed by Chris Nobbs and Simon Langsford 1/1/05



## South Australian Museum Education Program

Phone: (08) 8207 7429 • Fax (08) 8207 7430 • Email: [Education@samuseum.sa.gov.au](mailto:Education@samuseum.sa.gov.au) • Web: [www.samuseum.sa.gov.au](http://www.samuseum.sa.gov.au)

## Australian Aboriginal Cultures Gallery - Ground Floor Inquiry Cards

### Adelaide

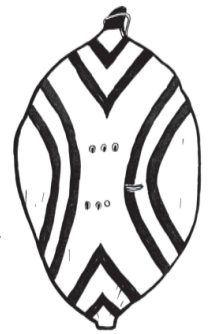


Warriparinga,  
ceremonial place.

Listen to some Kurna people on the film screens talking about their lives. Record three main points they make about Kurna culture and their personal lives.

Find the painting of Kadlitpinna, (a Kurna man carrying his shield). Why was he so important? Why do you think he is important today? (Use the labels for information.)

Use the display of remains found in old Kurna fireplaces around Adelaide to describe what happened after the Europeans arrived here in 1836.



Find the large photograph of Ivaritji, a Kurna women wearing a cloak. Record some information about her life.

## South Australian Museum Education Program

## Australian Aboriginal Cultures Gallery - Ground Floor Inquiry Cards

### South East



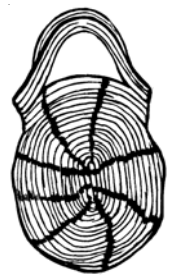
Lettie Nicholls,  
Teeluc.

Listen to Aboriginal people from this area talking about their lives on the screen. Record three main points they make about their culture and personal lives.

Find some examples of Ngarrindjeri basketry on display and explain what they were made from and how they were used.

Aboriginal men living in south eastern Australia were great wood carvers. Look for their wooden tools and weapons and collect information about:

- what they were used for,
- the type of pattern on them - carved or painted,
- how they were made - type of wood,
- who collected the carvings.



## South Australian Museum Education Program

## Australian Aboriginal Cultures Gallery - Ground Floor Inquiry Cards

### Cooper Diamantina



Reg Dodd, Marree.

Why do you think Aboriginal people living at Killalpaninna Mission made the toas in 1905? Toas are small sculptures made from wood and gypsum and represent places visited by their Muramuras, or Dreaming Ancestors.

Each toa has a name and tells you a story about a place. Record the story for this toa shaped like a pelican's head.

Use these clues to find more toa's:

- men plucked the hair out of their beards
- two wild ducks opening their beaks to quack
- mouth open, like a yawning man

Try drawing them and naming them. Then note the Aboriginal group they belong to and who collected them.

(For more information find the Speaking Land computer screens. Go to Regions then Cooper Diamantina then Toas).



## South Australian Museum Education Program

## Australian Aboriginal Cultures Gallery - Ground Floor Inquiry Cards

### MacDonnell Ranges



Doug Abbott, Alice Springs.

Alice Springs is in the area known to Arrernte people as Mparntwe. Here several important Dreaming tracks intersect in the ancient MacDonnell Ranges.

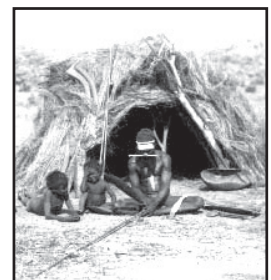
Find this Arrernte shield and record information about:

- the design,
- who collected it,
- and how old it is.



Have a look at this old photograph of an Arrernte camp. Describe the Arrernte people's way of life in the desert from what you can see in this photograph.

Discuss how the Arrernte people's lifestyle has changed.

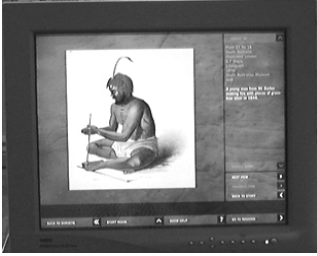


## South Australian Museum Education Program

## Australian Aboriginal Cultures Gallery - Ground Floor Inquiry Cards

### Fire-making

Aboriginal people used fire for cooking, warmth, light at night and clearing dry grass.



See if you can identify two ways of making fire using friction. How were these two pieces of equipment used by Aboriginal people to make fire?

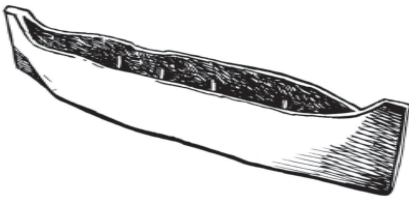


Record information about fire-making techniques and how fire was used.

## South Australian Museum Education Program

## Australian Aboriginal Cultures Gallery - Ground Floor Inquiry Cards

### Watercraft



Aboriginal people often used canoes to travel along rivers, across lakes and on the sea.

Find the old tree outside the gallery entrance. Why is it called a canoe tree? Where did it come from?

Collect information about the canoes on display.

For example,

- the types of wood used to make these canoes;
- how they were made e.g. the tools used;
- what suited them for rivers, lakes or the sea.



Please do not touch the canoes.

## South Australian Museum Education Program

## Australian Aboriginal Cultures Gallery - Ground Floor Inquiry Cards

### Spears and Spearthrowers

Explain how a spearthrower assisted Aboriginal men launch their spears much further, without ruining their aim.



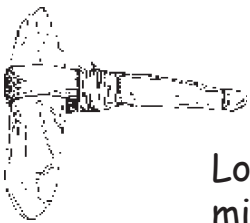
Identify the similarities and differences between spearthrowers belonging to two groups of Aboriginal people.

See if you can identify different types of spears on display. Explain how they are suited for hunting kangaroo, emus, fish or ceremonies.

## South Australian Museum Education Program

## Australian Aboriginal Cultures Gallery - Ground Floor Inquiry Cards

### Stone Tools



Aboriginal people used the stone tools on display for the never-ending daily chores of hunting, chopping, grinding, scraping and pounding.

Look at the displays of large upper and lower millstones. What do you think Aboriginal women used them for? Use the labels to find out where they were collected.



Aboriginal men made axes. Find one on display and describe how it was made.

Look closely at some flaked stone tools and describe their shapes. Explain how they might have been used.

## South Australian Museum Education Program