

# Fossils

## Early Years - Student Activities



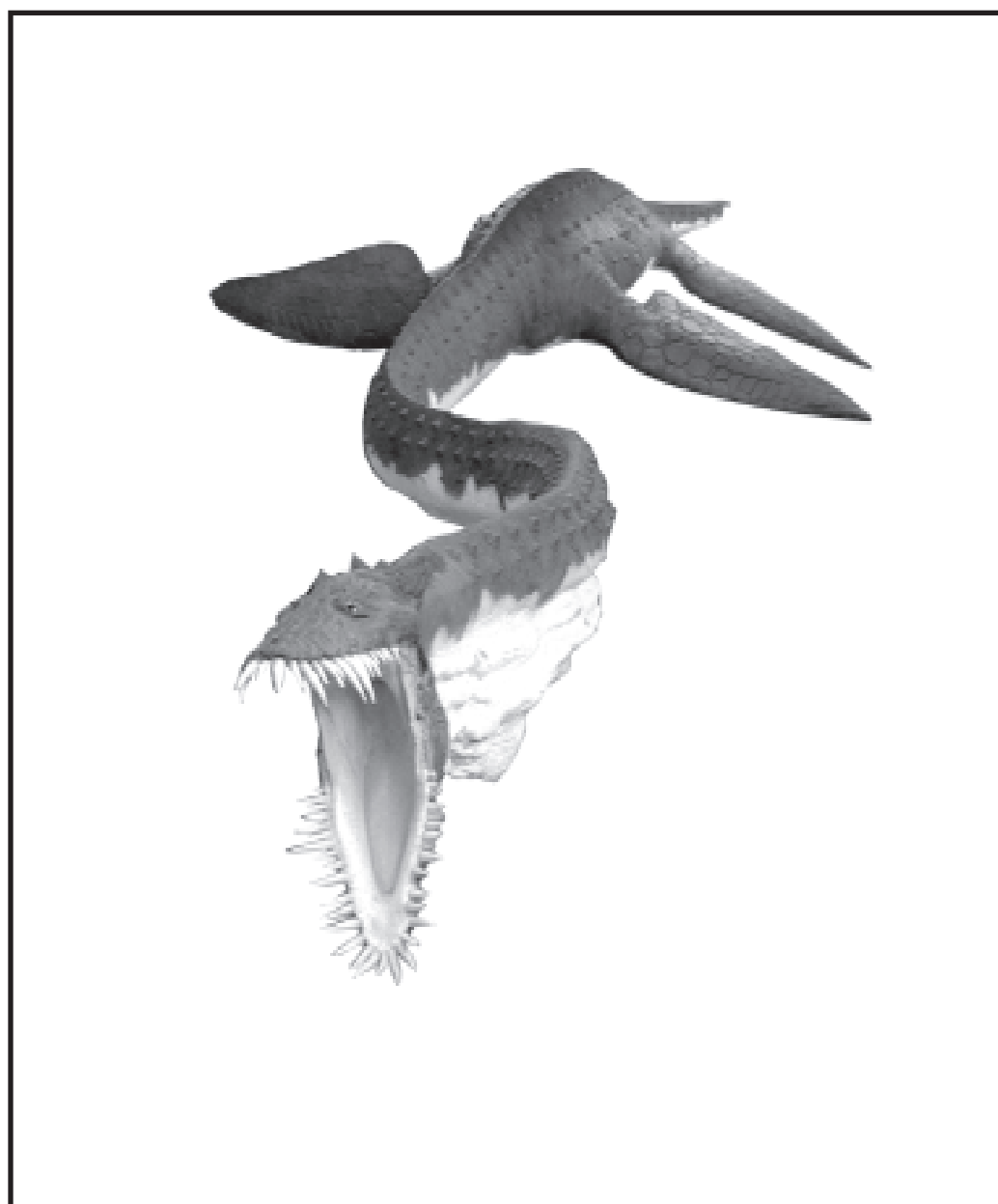
Government of South Australia  
Department of Education and  
Children's Services

This Outreach Education Program for schools is made possible by the partnership between the South Australian Museum and the Department of Education and Children's Services. Outreach Education is a team of seconded teachers who are based in public institutions.

© Department of Education and  
Children's Services and SA Museum

This work may be reproduced by South Australian teachers for use with their students. For all other uses contact the S.A. Museum Education Service.

Authors: Chris Nobbs and Simon Langsford



### Fossil tree (*Outside the museum by the east wing*)



Touch the fossil tree trunk.

Tell a friend what it feels like.

The **fossil tree** feels like \_\_\_\_\_

It has been turned into \_\_\_\_\_

Search for some fossils stuck in the museum walls.

Where do you think these animals lived?

On the land          in the sea          or in the sky.

(Circle your answer)



### **Allosaurus atrox** skeleton (*Museum foyer above the security desk*)

Look out there is an Allosaurus skeleton in the museum!

Draw the shapes of some Allosaurus teeth.

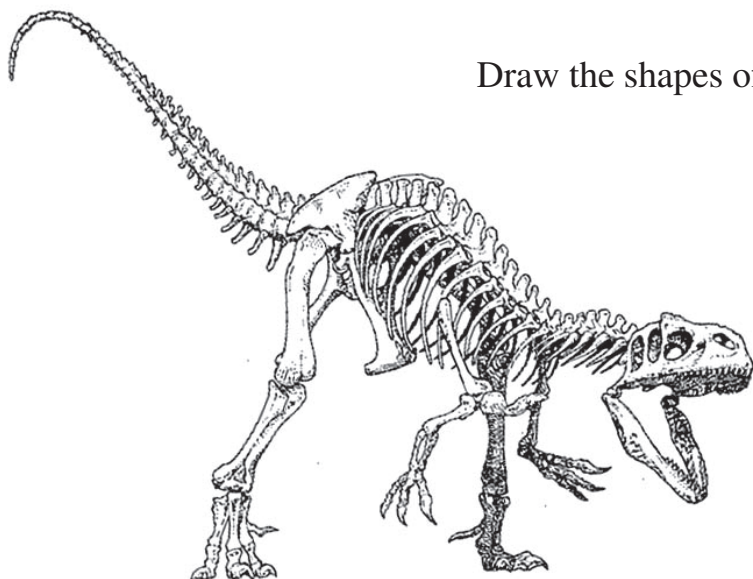


Illustration by Andrew Plant

Do you think it ate  
meat or plants?  
(circle your answer)

Write down the name of a dinosaur that looked like Allosaurus. \_\_\_\_\_

Write down the name of a dinosaur that ate plants. \_\_\_\_\_

**Student Group Record Sheet**

Plesiosaur **model** (*Level 3 Origin Energy Fossil Gallery*)

Explore the gallery. See if you can find the plesiosaur model.

Look for the plesiosaur's:

**teeth**

**flippers**

**scaly skin**



Draw a line to join the words to the parts on the plesiosaur's body.

Plesiosaurs liked to eat \_\_\_\_\_

Where do you think the plesiosaur lived millions of years ago?

**in the sky**

**on the land**

**in the sea**

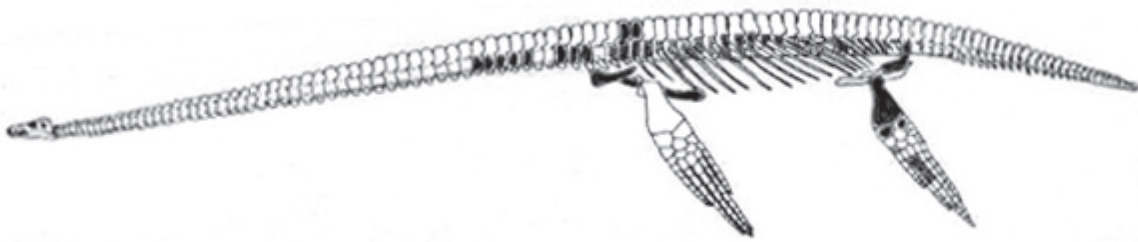
(Circle your answer.)

Plesiosaur **bones** (*Level 3 Origin Energy Fossil Gallery*)

Plesiosaurs are **extinct**. When this one died its bones were buried in mud on the sea floor.

Look closely at its skeleton. Can you see its **backbones** and **flipper bones**.

Circle them on the skeleton here.



Which parts of the plesiosaur skeleton are missing? \_\_\_\_\_

What do you think the plesiosaur bones have turned into? (Circle your answer.)

**wood**

**opal**

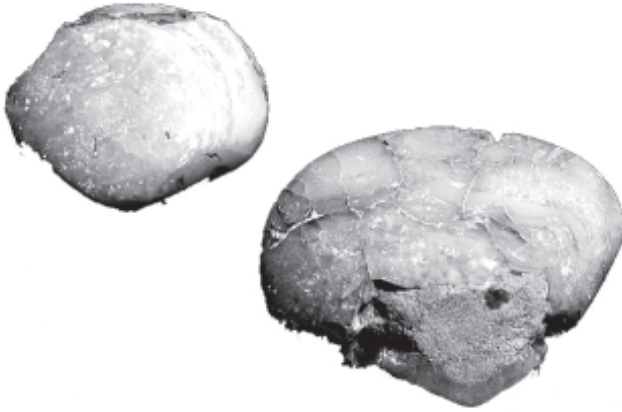
**gold**

**plastic**

### Opal fossils *(Level 3 Origin Energy Fossil Gallery)*

Look for other animal fossils that lived in the sea with the plesiosaur.

Find animal fossils like these.



What kind of fossils are they? \_\_\_\_\_

Describe their beautiful colours.

-----  
-----

Did these animals have their hardest parts on the, **inside** OR **outside**?  
(Circle your answer.)

I think these animals have been turned into \_\_\_\_\_

### Sea creatures *(Level 3 Origin Energy Fossil Gallery)*

Look around the gallery. I saw some sea creatures that looked like these.

(Circle which animals you saw.)

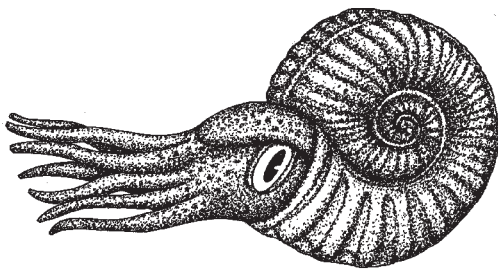
Ammonite

Ichthyosaur

Belemnite

Fish

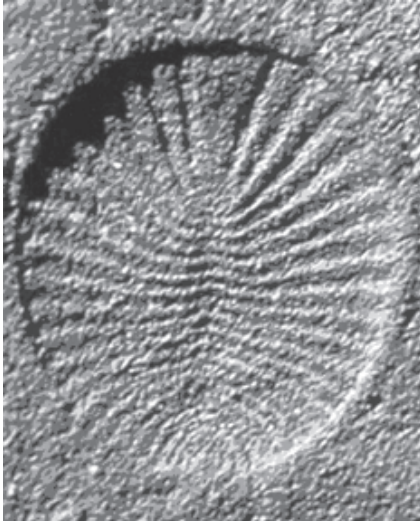
Shark



**Fossils from the Flinders Ranges** (*Level 3 Opposite the big lift*)

Have a look at the big jigsaw puzzle made of stone slabs. Carefully touch the ripple marks. A long time ago this used to be the sandy sea floor.

Walk around to the other side and look closely at the slabs.



Can you find some fossils of flat worms that look like this?

Count how many can you find. \_\_\_\_\_

Have a look at the biggest flat worm fossil in the window.

Look at the label and write down its name.

\_\_\_\_\_

**Big changes in the future!**

You now know that the world was very different a long time ago.

Talk to your friends about some of the big changes that might happen in the future.

**Hotter!****Bigger...!****Too many...!****Extinctions!****Wetter!**